



WG1: Science Capability and Assurance (1/6)

INTRODUCTION

- In December 2018 the Board agreed WG1 recommendations.
- Proposal for addressing recommendations split into 5 themes:

- Cross-cutting
- Engagement and comm
- Identifying and
accessing science
- Science capability
- Assurance

WG1: Science Capability and Assurance (2/6)

CROSS-CUTTING ISSUES

- Putting FSA science and evidence centre-stage.
- Enhanced Senior Leadership Team is being built to provide greater strategic oversight.
- Engagement with other Government Departments.
- Building research partnerships with funders (promoting FSA priorities).

.....

WG1: Science Capability and Assurance (3/6)

ENGAGEMENT AND COMMUNICATION

- **Partnerships:** CSA links continue to prove valuable in building new research partnerships but...
- **Capacity:** ...increasing bandwidth for wider SERD engagement reducing burden on our CSA.
- **Communication:** Better FSA science comms internally and externally.
- **Engagement:** Increasing engagement with key science influencers, early career researchers and learned societies.

.....

WG1: Science Capability and Assurance (4/6)

IDENTIFYING AND ACCESSING THE SCIENCE WE NEED

- **Sourcing Science:** A clearer, more accessible, better resourced and more collaborative view of the science we need.
- **Funding:** Investment in science is increasing to reflect its increased priority in FSA post-EU exit.
- **SEF:** Pilot new ways to access science and ways of working.

.....

WG1: Science Capability and Assurance (5/6)

SCIENCE CAPABILITY

- **Internal Expertise:** Built up FSA expert capability and capacity.
- **External Expertise:** A more systematic approach to engaging academics with FSA areas of research interest.
- **Building Networks:** Forging stronger links between science, policy and enforcement within the FSA, and build external partnerships for effective response to emergencies.

.....

WG1: Science Capability and Assurance (6/6)

ASSURANCE

- Developing a framework for assurance of FSA's access to, and use of, science, particularly within the Risk Analysis Process, clearly setting out how we use evidence to inform decisions and communicate that process openly.
- FSA will publish its food and feed safety advice and the evidence and analysis on which that advice is based.

.....

WG2: Risk and Uncertainty (1/6)

INTRODUCTION

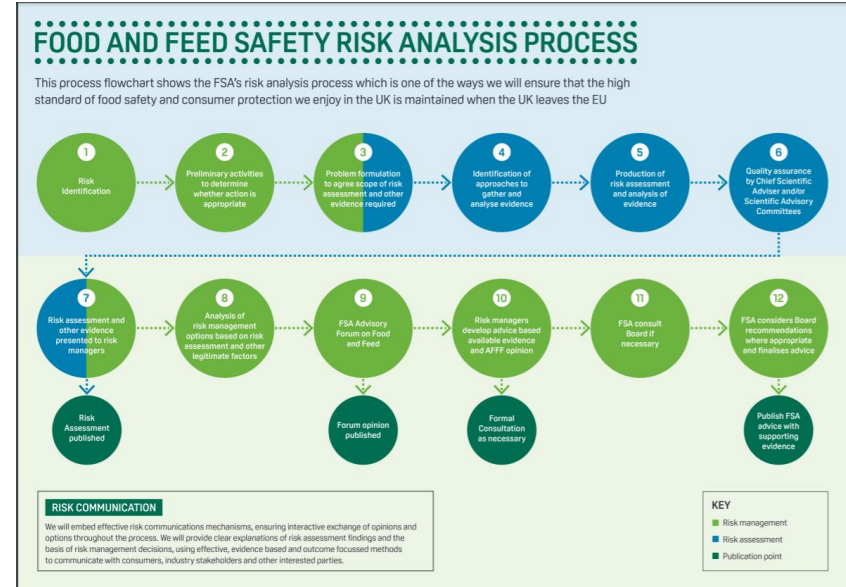
- In December 2018 the Board agreed WG2 recommendations.
- EU Exit preparations help drive delivery of FSA response.
- Proposal for addressing recommendations split into 5 themes:

- Approach to risk analysis
- Organisations design
- Capacity and capability
- Risk communication
- Governance and assurance

WG2: Risk and Uncertainty (2/6)

APPROACH TO RISK ANALYSIS

- Risk Analysis Process.
- Using best practice principles for establishing and communicating risk and uncertainty.



WG2: Risk and Uncertainty (3/6)

ORGANISATIONAL DESIGN

- Separation of risk assessment and risk management functions.
- The Advisory Forum on Food and Feed which draws together officials from across Government and considers risk management options.

.....

WG2: Risk and Uncertainty (4/6)

CAPACITY AND CAPABILITY FOR RISK ASSESSMENT/RISK MANAGEMENT

- Increased capability and capacity, and recruitment of new science and policy staff.
- Guidelines are in development which set out how the risk analysis process works in practice.
- The guidelines will be interactive and support users varying needs.
- High-level text of the guidelines is being shared with SACs.
- SACs will have opportunities to discuss the other layers

.....

WG2: Risk and Uncertainty (5/6)

RISK COMMUNICATION

- Risk communications guidelines have been drafted for day one.
- We will be reviewing the existing risk communication frameworks.
- The review will inform the a new risk communications framework.
- ACSS to help assure best practice and outcomes of a new FSA toolkit.
- This work is out to tender with a toolkit delivery date of April 2020.
- This work now falls to business as usual led by the Social Science team

WG2: Risk and Uncertainty (6/6)

GOVERNANCE AND ASSURANCE

- The Audit and Risk Assurance Committee (ARAC) provides scrutiny.
- The FSA Chief Scientist will provide oversight.
- FSA will publish its food and feed safety advice and the evidence and analysis that underpins that advice.

.....

Are There Any Questions?